

Agenda

Introduction to Counseling and HSBP	6:00 - 6:10
Running Start	6:12 - 6:40
Naviance and More	6:45 - 7:10
Financial Aid 101	7:15 - 7:35
Community College Presentation	7:40 - 8:00

School Counseling Team

Counselors	Grade Level/ Last Name	Email Address	Ext.
Jill Brown	9-12/A-Ferd	jill.brown@shorelineschools.org	4300
Kim Smith	9-12/Ferg-Hos	kimberly.smith@shorelineschools.org	4307
Sara McManus	9-12/Hou-Mce + ELL students	sara.mcmanus@shorelineschools.org	4283
Jenny Breed	9-12/Mcf-Schm + AVID 10/11	jenny.breed@shorelineschools.org	4318
Wendy Friedman	9-12/Scho-Z + AVID 9/12	wendy.friedman@shorelineschools.org	4299

School Counseling 101

In alignment with the ASCA National Model, as school counselors we are here to help your students find balance as they make their way through 4 years of high school.

We help your students in three main ways:

- *Academic Support**
- *Personal and Social**
- *Career and College Planning**

High School and Beyond Plan (HSBP) Lessons

9th Grade	10th Grade	11th Grade	12th Grade
Honors English 9 Classes October	Honors English 10 Classes November/December	United States History and APUSH Classes April/May	English 12 and AP Literature September and ongoing throughout year
<p>Counseling 101</p> <p>Coping and Stress Stoplight</p> <p>How to Report Concerns</p> <p>HSBP Naviance Lesson - 'Do What You Are Inventory'</p> <p>Roadmap - Exploring Career Interest</p>	<p>Stress and Mental Health</p> <p>Stoplight Review</p> <p>How to Report Concerns</p> <p>Post-Secondary Options Overview</p> <p>HSBP Naviance Lesson - Career Cluster Inventory</p> <p>Career Research</p>	<p>Stress and Mental Health Activity</p> <p>College and Career Jeopardy</p> <p>HSBP Naviance Lesson - Career Cluster Review, Career or College Research, Supermatch and Scattergrams Overview</p> <p>Junior Post-Secondary Plan Meeting 1-1 with Counselor</p>	<p>Senior Class Meeting - College Application Overview, Naviance, and Senior Post-Secondary Survey</p> <p>Senior Blitz Meeting 1-1 with Counselor</p> <p>Personal Statement Panel</p> <p>FAFSA/WASFA Help Night</p> <p>Ongoing Post-Secondary Application Support</p>



COVID-19 School Closure Version

*Find all necessary forms in CANVAS under
your Class of 20xx tile.

RUNNING START 101

SHORECREST HIGH SCHOOL - WINTER 2021



Covid 19 – Stay Up to Date

These are challenging times. We don't know what our schedule will look like next year, but we are planning on a full return to school and all six classes. We don't know what the colleges will do, but we do know they will mostly follow similar plans.

As you start this process, please refer to the community college running start webpage for the most up to date information regarding running start enrollment and registration. Many community colleges are offering online orientation and general information sessions.

Is Running Start right for YOU?

- Academic challenge
- Diverse learning environment
- Can you be assertive and ask for help on a college campus?
- Have you done well in previous academic work?
- Are high school activities important to you?
- If and when we return to in person, do you have reliable transportation?

CHALLENGES participating in Running Start

- Books and fees – can be a few hundred dollars per quarter
- Fast pace and time demands of college studies
 - **The material covered in a 10-week quarter at the college is the equivalent to that which is covered in a year of high school
- It is student responsibility to track scheduling (including Early Release days) and timely arrival for all SC and college classes

Tips for Success!

- Attendance matters! ... go to class
- Don't be afraid to ask for help
- Talk to your instructor and visit the Learning Support Center and instructor's office hours
- Connect with other students on campus
- Don't procrastinate
- Easiest to start in the fall quarter

Mythbusters

Myth: I can transfer to a 4-year college/university after earning my associates degree through Running Start.

◦Fact: No. You cannot transfer to a 4-year college/university.

You must apply as a new student/applicant like all seniors in high school as you are still a high school student– you will be applying for FAFSA your senior year.

Myth: Running start is easy, I don't have to go to school everyday.

◦Fact: You might not have class 5 times a week for every subject, but the average amount of homework is **2-3 hours for every hour of instruction time.**

Difference between RS and AP?

- RS is a state program
- AP is a nationally recognized program; college admissions in any state will recognize and honor AP classes and/or credit earned via AP
- RS college credits may NOT all transfer to out of state colleges and private schools in the specific major you are interested in. You need to contact each school to confirm, otherwise it will transfer as an elective credit
- Highly selective universities, in most cases, would prefer AP to RS

Local Community Colleges

Bellevue College
3000 Landerholm Circle SE
Bellevue, WA 98007
Building B Office 233

Email: chspprograms@bellevuecollege.edu
<http://www.bellevuecoll.edu/runningstart/>



Cascadia Community College
18345 Campus Way NE
Bothell, WA 98011
Office: Kodiak Corner, CC1 First Floor
425-352-8146

Email: runningstart@Cascadia.edu
http://www.Cascadia.edu/advisingrunning_start.aspx



Edmonds Community College
20000 68th Ave. W
Lynnwood, WA 98306
Office: Lynnwood Hall, Second Floor,
Room 235

Email: runningstart@edcc.edu
<http://www.edcc.edu/highschool/runningstart/>



Everett Community College
2000 Tower Street
Everett, WA 98201
Office: Parks Student Union, Room
201
455-388-9008
Email: highschoolrelations@everettcc.edu
<http://www.everettcc.edu/enrollment>



Lake Washington Technical College
11605 132nd Avenue NE
Kirkland, WA 98034
425-739-8107
Email: matthewallen@lwtech.edu
http://www.lwtech.edu/explore_our_programs/running_start/default.aspx



Shoreline Community College
16101 Greenwood Ave. N.
Shoreline, WA 98133
206-546-4101
Email: mtungol@shoreline.edu
<https://www.shoreline.edu/running-start/>



RUNNING START INFORMATION NIGHT



"I came to Shoreline as a Running Start student. I was really nervous and scared, but Shoreline is such a welcoming community so I was able to make a lot of friends and to find I was a part of this school. I chose Running Start because I wanted to get ahead. Now I've learned that I have perseverance and that I'm strong."

— Eneya

11th and 12th graders can save money and time by earning high school and college credits together. Learn more at the information night!

- Learn about Running Start and benefits of dual enrollment
- Hear from current Running Start students
- Gain tips on college expectations for success
- Begin your steps to apply and enroll for next year

RSVP: https://www.surveymonkey.com/r/SCC_RunningStart

Tuesday, May 4
6:00 p.m. - 7:00 p.m.



For more information,
contact Amy Stapleton
astapleton@shoreline.edu
206.705.8715

Shoreline Community College is committed to nondiscrimination. To request this information in an alternate format or for disability accommodation, contact Student Accessibility Services (206-546-4545, 206-546-4520 TTY, sas@shoreline.edu) or visit www.shoreline.edu/accessibility.

How do I qualify for RS?

Check with each campus; ****Covid Updates**

Submit proof of placement with one of these:

- ****Transcript/GPA** – Make your request to Ms. Hudson.
jocelyn.hudson@shorelineschools.org
- SBA ELA score of 3 or 4
- AP English exam score of 4 or 5
- SAT – SCC example SAT 460 or ACT 19

→ You must be placed in English 101 to qualify for RS.

How many classes can I take?

- Combined enrollment allows for just a bit over full time student status
 - Ex: 15 credits at college and one high school class (3 RS & 1 HS)
 - Ex: 10 credits at college and two high school classes (2 RS & 2 HS)
 - Ex: 5 credits at college and four high school classes (1 RS & 4 HS)

Enrollment Example - Jr Year

Shorecrest High School, Grade 11: US History, English, Health, PE, Electives

Semester 1 (September - January)	Semester 2 (February - June)
Period 5 Math	Period 5 Math
Period 6 Science	Period 6 Science

Running Start classes:

Fall Quarter (late Sept. - Dec.)	Winter Quarter (Jan. - March)	Spring Quarter (March - June)
Eng 101 Morning Class	Elective based on grad reqs	Elective based on grad reqs
US History Morning Class	Elective based on grad reqs	Elective based on grad reqs

Enrollment Example – Sr Year

Shorecrest High School, Grade 12: Senior Civics, English, PE, Electives

Semester 1 (September - January)	Semester 2 (February - June)
Period 5 Math	Period 5 Math
Period 6 Civics	Period 6 Lifetime Sports

Running Start classes:

Fall Quarter (late Sept. - Dec.)	Winter Quarter (Jan. - March)	Spring Quarter (March - June)
Eng 102 morning class	Elective based on grad reqs	Elective based on grad reqs
Elective based on grad reqs	Elective based on grad reqs	Elective based on grad reqs

Pro-tips about timing!



- College classes often run 4 or 5 days per week.
- Easiest to have an even number of classes at SC: 2 or 4. Remember early release Weds!
- Easiest to have classes at the same time of day: ex. 5th and 6th, or 3/4/5/6 or 1/2/3/4. This aligns better with a college class that meets every day at the same time.

Timing Example #1

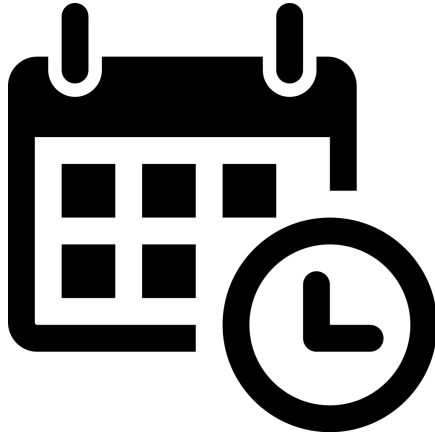
Ex: Morning classes at the college need to be done by 11:00 to be back for 5th/6th at SC on both long days and early release Wednesdays.

*Best option for student athletes



Timing Example #2

Ex: Morning class needs to be done by 8:30 to be back for 3rd/4th at SC on both long days and early release Wednesdays.



Timing Example #3

Ex: You could be at SC in the morning thru lunch and take a class that starts at 12:30 (limited offerings) or an evening class.



Will I have to pay tuition at the community college?

- Important to meet with counselor and complete **Enrollment Verification Form** – this calculates the combined enrollment.
 - ⇒ ⇒ If combined course enrollment exceeds the maximum allowed, students will be charged at the current tuition rate.
- Counselors will offer “drop in sessions” for completion of forms. Make sure you subscribe to the REMIND acct and read your k12 account for updates.

Running Start Costs



- The Running Start program pays for up to 20 credits if you are on free/reduced lunch.
- 15 credits are covered for students who are NOT on free/reduced lunch– based on a full-time schedule.
- A student cannot exceed 1.2 Full Time Equivalent Enrollment (FTE). If a student exceeds 1.2 FTE between both high school and college campus, they will be charged tuition.



**** Transportation is not covered.**

Running Start Costs



Students are responsible for:

- Textbooks and supplies
- Quarterly Campus and Class Fees (Ex. lab fees, classroom materials)
- Excess credits (for going over 1.2 FTE)
- Transportation!

**Fee waivers are available for books/supplies for students on free/reduced lunch. You are responsible for meeting with your counselor to set up a fee waiver.

Running Start at Shorecrest

- Regardless of your plans, you want to register for a full schedule at SC for 21-22.
- After qualifying for RS; students must meet with a counselor to review graduation plan and goals.
 - **Typically in late May for Fall enrollment.
 - Complete the RS Planning Sheet.
- Review the RS Agreement form, sign, return to counselor
- Your k12 account is your SC lifeline. All communication occurs through email. You must check it or risk missing grad info and deadlines. Students are required to complete HSBP and Community Service.
- SC Counseling Team uses Remind. Sign up for the SC RS Remind Account

Parental Access to information at the college

- Is limited.
- College instructors will not share info. with parent or Shorecrest staff, including your counselors! Counselors only receive final quarter grades from the RS office.
- Written consent must be on file with ****Enrollment Services** for records to be disclosed to parents.

****SC requires your FERPA permission so that your guardians have access to your grades.**



Every quarter . . .

- Meet with SC counselor to complete Enrollment Verification Form each quarter to select specific classes to meet graduation requirements and avoid conflicts with SC classes. [RS Equivalency Guide](#)
- Submit Enrollment Verification Form to college and attend a registration appointment.
- Make sure to meet deadlines or risk classes being full!
- Regularly check your [K12 account](#) to get critical info.

Always communicate with your counselor when you ...

- Change a class selection
- Are on the waitlist for a core graduation requirement
- Drop a class
- Struggle in a class/with a professor
- Fail a class
- Counselors receive notice from Running Start once a quarter, we cannot track your grades/progress.
- Always make sure you are on track to graduate.

The Basics to Get Started

1. Review the CC website that you're applying to.
There have been many changes – so look closely.
2. Complete all required SC forms and planning sheets.
3. Apply for admission to the college
4. Follow instructions you get from them re:orientation and placement (transcript, test scores, Eng 101 eligibility)
5. Only after you are a confirmed student, make an appointment with SC counselor for Enrollment Verification Form – (May)
6. Register at the college
7. Once you have a college schedule, confirm registration and class times w/SC counselor (late May, early June)

Another Visual of Next Steps –

<u>Bellevue CC, Cascadia CC, Everett CC, Lake WA CC, Shoreline CC</u>	<u>Edmonds CC</u>
<ul style="list-style-type: none"> • Register/ apply for the school online or in person at the CC RS office 	Complete an “Application Packet” at edcc.edu/RunningStartEnroll . Complete the following steps from the packet:
<ul style="list-style-type: none"> • Attend a CC RS orientation 	<ul style="list-style-type: none"> • Step #1: Apply to the College
<ul style="list-style-type: none"> • Take the placement test <u>OR</u> get proof of college placement from the institution you plan to attend* 	<ul style="list-style-type: none"> • Step #2: Determine English Placement • Step #3: Complete New Student Worksheet and Parent Agreement
<p>*Proof of College Placement: SBA ELA score (3 or 4), copy of your unofficial transcript (GPA 3.0+ for EdCC), PreACT (Eng. 18, Rea. 22), ACT (22 Comp.), PSAT (Eng. 26, Rea. 26), SAT (Rea/Writ 480), AP Score (3, 4)</p>	

Next Steps!!

Next Steps for NEW Running Start Students

1. Decide if RS is a good fit for you.
2. Decide which community college you would like to attend.
3. Apply to the College you are going to attend through their website and determine placement for English and math.
4. Once eligibility is determined, have your guardian read the Shorecrest RS Parent Agree ment, your guardian will need to sign this before your counselor can sign off on the Running Start Verification Enrollment Form.
5. Make an appointment with your counselor via email or phone to get your RSVEF signed.

COVID-19: Forms will be signed via email

****Remember – YOUR CLASS OF 2022/23 CANVAS COURSE HAS ALL FORMS/INFO NEEDED**

SACTC Running Start Enrollment Verification Form

Student Information:

Student Name: _____
 Last Name First Name MI
 Home Phone: _____ Cell Phone: _____
 Email Address: _____ SSID #: _____
 Responsible Parent/Guardian: _____
 College: _____ College SID #: _____

Check if this is a revision:
☐ New Student
☐ Returning Student
☐ Student Enrolled in Multiple Colleges
☐ Spring Quarter Eligibility Adjustment Form (SGEAF) attached

High School: _____ District: _____
 Grade Level: ☐ Junior ☐ Senior ☐ Senior - Available for meeting district graduation requirements only (WAC 202-209-0204)

Location of Running Start Class: ☐ College Campus ☐ High School Number of Months Class Offered: _____
 College Term: ☐ Fall ☐ Winter ☐ Spring High School Term: _____ Semester _____ Trimester _____

For the college term above and the _____ high school term, the student will be enrolled in high school and skill center classes equating _____ full-time equivalent (FTE).
 Student is eligible for a maximum of _____ college credits, without incurring college tuition costs, based on the above stated high school FTE.
 Comments: _____

Recommended Running Start Classes:

College Course (Course & Number)	# College Credits	High School Equivalency	# HS Credits
	3		
	3		
	3		
	3		
	3		
	3		

Signature of High School Counselor _____ Date _____
 Signature of College Running Start Rep _____ Date _____
 High School Counselor Printed Name _____ Phone Number _____
 College Running Start Rep Printed Name _____ Phone Number _____

* Student must sign this form when enrolling in a college course. If a student enrolls in more than one college course, the student is responsible for paying all college tuition and fees associated with exceeding the college credits identified in the table, or withdrawing from the excess credits in both school courses.

Then...

6. Complete any additional steps required by the Community College you plan to attend. You will need to **SEND** your signed RSVF (Running Start Verification Form) to the college and get registered for classes. Check with your college for other requirements. **Do this early to ensure course registration.**

COVID-19 School Closure: Send a copy of this signed form to the Running Start office via email. School counselors can sign this form via email.

7. Once you are registered for RS classes, you must turn in/email a **copy of your Running Start Schedule** to your counselor for your SHORECREST schedule to be adjusted.

****Remember – YOUR CLASS OF 2022/23 CANVAS COURSE HAS ALL FORMS/INFO NEEDED**

Counselor Sessions for Running Start Support

If your student still has questions after this presentation, please have them come to College Apps Cafe for drop in support. The full team of counselors is available at lunch on Thursdays and Fridays.

<https://zoom.us/my/suzanne.monson>

Once enrolled in a college, check the broadcast and morning announcements for drop in sessions for assistance with Fall 21 registration. (after Spring Break)



Power Tools

YOUR SHORECREST "TOOL BELT" FOR POST-HIGH SCHOOL PLANNING

Put away the measuring tape. You're not comparing yourself to someone else. It's not a race. It's your journey.



No matter what: a High School & Beyond Plan is a state graduation requirement

- ▶ Four-year college/university
- ▶ Two-year college
- ▶ Trade/Technical School
- ▶ Apprenticeship
- ▶ Internship
- ▶ Military
- ▶ Official Gap Year program
- ▶ Direct to workforce
- ▶ Religious/Mission



Buckets for your College-Prep Toolbelt:
"Reach," "Target" and "Safety" schools:
A solid list includes 3 to 8 colleges.

Consider cost; proximity and "fit."



Snapshot: Where Shorecrest Students Apply

Four-Year Colleges

58 to 63 percent

Most applicants:
UW Seattle & UW
Bothell; Western
Washington
University; Seattle
University

Two-Year Colleges

28 to 32 percent

Most applicants:
Shoreline College;
Edmonds and
Cascadia colleges

Other Choices:

Workforce: 2 to 5 percent

Tech/Trade School: .8 to 2
percent

Military: 1.7 to 3 percent

**Internships/Gap Year/
Mission programs: 3**
percent

3-year Snapshot: Where Shorecrest Students Have been Accepted

Public universities

UW Seattle campus: 153 applied/93 admitted/66 entered in fall

UW Bothell campus: 71 applied/38 admitted/26 entered

WWU: 85 applied/51 admitted/30 entered

Private universities

Seattle Pacific: 28 applied/15 admitted/4 entered in fall 2019

Gonzaga: 25 applied/14 admitted/5 enrolled in fall 2019

Seattle University: 32 applied/21 admitted/1 enrolled in 2019

Out of state:

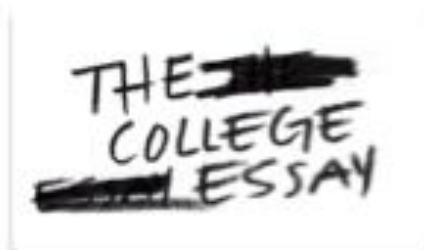
USC: 99 applied/12 admitted/3 entered over past 3 years

Cal-Poly: 50 applied/47 admitted/14 entered over past 3 years

Stanford: 79 applied/2 admitted/entered over past 3 years

Harvard: 21 applied; 1 admitted over past 3 years

Other tools available...



Personal Statement/ Essay Help

Proofreading sessions involving college reps and SC staff in the fall – but winter, too



College Apps Café'

Currently Thursdays and Fridays at lunch via Zoom. Pop in, ask questions or request a break-out room.



FAFSA/WASFA Help Night

Expert support for completing your Free Application for Federal Student Aid or Washington Application for Student Financial Aid



Your counseling team understands how to manage all these power tools.

What You Should Know



Four-Year College Application Pearls...

The UW Seattle is not always a "target" school

Even students with a 3.9 have been waitlisted at UW Seattle

UW Bothell has less restrictive requirements – and the diploma reads "University of Washington"

Not all colleges need a letter of recommendation

Typically, only private four-year colleges need one or more letters of recommendation

The UW does NOT need/want LORs

LORs go through Naviance

Colleges typically want "core 4" teachers that have had the student in class within the past year

"Demonstrated Interest" Matters

Getting on a college's radar is important.

Attend virtual or in-person college rep visits via Shorecrest

Tour the campus, if it's open

Email the college rep with a good question

Connect with a college through a College Fair or Expo

Apprenticeship/Trade Pearls

High Demand Hiring

- ▶ The U.S. Construction industry faces an estimated skilled labor shortage of 1.5 million through 2023.
- ▶ With 28% of the current workforce estimated to retire by 2027, new workers are needed.
- ▶ It takes a craft professional four to eight years to gain experience and competency and up to 12 years to become fully trained.
- ▶ Source: Construction Labor Market Analyzer

Average age of entry: 26

- ▶ When students discover college is "not for them" many turn to trades and professions
- ▶ Many training programs are "earn while you learn"
- ▶ Outside scholarships are available for trade schools and two-year colleges

What SC Counselors Wish College-Planning Students and Families Knew



The Common App is Better than the Coalition App

If you have a choice, the Common App is a better way to promote yourself



Most colleges don't need the SAT or ACT to apply

Some select schools still use it for merit aid or competitive direct entry.



Don't add LOR requests to the Common App

LOR requests go through Naviance.

What Else Counselors Wish ALL Students and Families Knew



Volunteerism Still Matters

Four-year colleges and scholarships still ask about community service even if Shoreline Schools hasn't decided whether to continue making it a graduation requirement.



Respect the "courtesy zone"

Request LORs at LEAST three weeks before the deadline – not including school breaks – and write a thank you note



Understand your deadlines

Early Action

Early Decision

Regular Decision

Rolling Decision

Summer Suggestions

Good Moves

- ▶ Start brainstorming your personal statement, if needed
- ▶ Volunteer with a purpose
- ▶ Find a job (babysitting, lawn mowing, etc. count, too)
- ▶ Timeline a few scholarships

Hold off on

- ▶ Finishing the Common Application, which opens Aug. 1
- ▶ Going out of state to take an SAT or ACT if your colleges don't need it
- ▶ Paying for any "honor society" memberships that aren't NHS
- ▶ Fee-based summer program on college campuses until you've checked with your counselor first

Financial Aid 101

Goals

- Types of Aid
- Financial Aid Terminology
- College Bound Scholarship
- Sample Award Letters

What is the FAFSA? Why file?

- Free Application for Federal Student Aid

[FAFSA](#) - for students with a SSN

[WASFA](#) - for students w/out a SSN

Starting point for state and federal financial aid and many scholarships

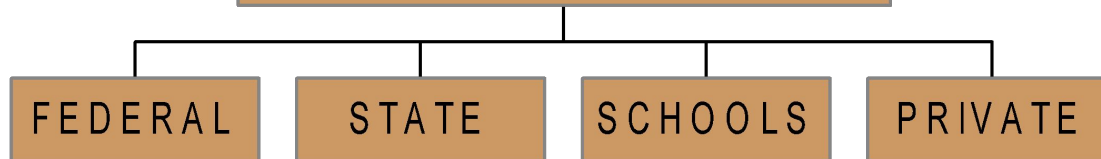
Determines the Estimated Family Contribution (EFC), soon to be called the Student Aid Index (SAI). Colleges use this to calculate your aid offer.

Types and Sources of Financial Aid

TYPES OF FINANCIAL AID



SOURCES OF FINANCIAL AID



Gift Aid

- Merit Based

- Institutional- offered based on profile, talents
- Scholarships – student seeks and applies, begin monitoring in 10th and 11th. Make a calendar of scholarships to apply for in senior year

- Need Based

- Federal and state based assistance
- Institutional

Consider WUE (Western Undergraduate Exchange)

Gift Aid

Free Internet scholarship search engines:

www.thewashboard.org for WA State

www.finaid.org

www.fastweb.monster.com

www.gocollege.com

- Shorecrest's Naviance site - Colleges Tab

Loans

- Offered to student or parent, through the financial aid offer
- Varying rates of interest and timing

Subsidized - interest is paid while student is in college

Unsubsidized - interest accrues from the origin of the loan

Work

- Work Study jobs- awarded as part of the financial aid process through the college, intended to help you pay for college. Does not count as income for the purposes of FAFSA filing.
- Non-Work Study jobs- these are added into the student's taxable earnings and are included in FAFSA calculations.

When and how do I file?

File online in fall of senior year:

www.fafsa.ed.gov

[WASFA](#)

Start by making an FSA ID (not needed for WASFA):

www.fsaid.ed.gov

- Opens October 1. Try to finish by Halloween!
- NO universal deadline- each college sets own deadline.
- Never pay someone to fill out the FAFSA/WASFA. Both are *always* **FREE**.

Who files?

Anyone planning on attending post-secondary education program: community college, four-year college, technical or professional program.

File online, with your student, in fall of senior year.

For divorced families: The parent who the student lived with the most files. If equal custody, parent who provided more financial support is the parent who files.

FAFSA Tips

- Read directions carefully.
- Make sure name, SSN & date of birth are accurate.
- Students and parent/guardian both create an FSA ID. It can be established in advance. Keep in safe location!
- Keep copies of your family's prior year's taxes.
- Can add up to 10 colleges for FAFSA to be sent to.
- Remember to file the FAFSA every year.
- Get help from events such the SC FAFSA Night, and use the help tools online.

Use YouTube or other websites

[Office of Federal Student Aid has good videos!](#)

Topics like:

[FAFSA and FSA ID Tips for Parents](#)

[How to create an FSA ID](#)

[FAFSA help in other languages](#)

WA State College Bound Program



To receive the scholarship, you must have signed up in 8th grade and:

1. File the FAFSA by required deadline.

* Be sure to include 6-digit school codes for all schools you FAFSA sent to

would like your

2. Graduate high school with a 2.0 or higher

3. Be a good citizen with no felony convictions

4. Enroll within one year of high school graduation in one of the 68 eligible institutions in WA State

5. Be a US citizen or eligible non-citizen

College Bound - Important Notes

- ❖ The College Bound Scholarship is a four-year scholarship that must be used within five years
 - Equal to 12 quarters or eight semesters maximum
- ❖ You must enroll in college within one year of high school graduation
- ❖ Enrollment does not have to be continuous
- ❖ You may enroll part-time but your scholarship will be reduced
- ❖ You must maintain Satisfactory Academic Progress (SAP)

The Aid Offer

- **Cost of Attendance (COA):** tuition, room/board, books, fees, personal expenses
- $COA - EFC = \text{Financial Need}$
- Colleges will put together an aid offer that may or may not meet 100% of need
- Colleges all use the same FAFSA information
- Colleges provide net price calculator

Simple Examples

EFC = \$5,000

- College A: COA \$11,000-EFC \$5,000= Need is \$6,000
- College B: COA \$27,000- EFC \$5,000= Need is \$22,000
- College C: COA \$52,000- EFC \$5,000= Need is \$47,000

Sample UW College Award Letter - COA about \$24,000. EFC= 0

29

1. We are pleased to offer for your acceptance the financial aid shown below. Please indicate your acceptance or rejection of each award by marking with an X. This offer may be canceled unless the original is signed and returned to the Office of Student Financial Aid by the reply date printed above. CAREFULLY READ BOTH SIDES OF THIS LETTER AND THE AWARD BULLETIN before signing the Certification (Section VI) on the bottom of the page.

AWARDS	SUMMER	AUTUMN	WINTER	SPRING	TOTAL	ACCEPT	REJECT
FEDERAL PELL GRANT	1850	1850	1850	1850	5550	<input type="checkbox"/>	<input type="checkbox"/>
STATE NEED GRANT	2573	2572	2572	2572	7717	<input type="checkbox"/>	<input type="checkbox"/>
FEDERAL SUPPLEMENTAL GRANT	137	136	136	136	409	<input type="checkbox"/>	<input type="checkbox"/>
FEDERAL WORK STUDY PROGRAM	1000	1000	1000	1000	3000	<input type="checkbox"/>	<input type="checkbox"/>
FEDERAL PERKINS STUDENT LOAN	334	333	333	333	1000	<input type="checkbox"/>	<input type="checkbox"/>
FED DIRECT SUB STAFFORD LOAN	1167	1167	1166	1166	3500	<input type="checkbox"/>	<input type="checkbox"/>
FED DIRECT UNSUB STAFFORD LOAN	667	667	666	666	2000	<input type="checkbox"/>	<input type="checkbox"/>
FEDERAL DIRECT PARENT LOAN	135	134	134	134	403	<input type="checkbox"/>	<input type="checkbox"/>

☐ I accept the total award ☐ I reject the total award ☐ Partial Acceptance (please explain on the back)

II. ASSUMPTIONS: Your award is based on the following assumptions: RESIDENT; UNDERGRAD;
ATTENDING 3 QTRS; NOT LIVING WITH PARENTS.
Comments: WORK STUDY INFORMATION IS AVAILABLE AT: [HTTP://WORKSTUDY.UW.EDU](http://workstudy.uw.edu);
SUMMER UNSUB STAFFORD LOANS ARE DISBURSED STARTING JULY 1ST;
Parent Loan is subject to credit approval.

III. RESOURCES: Based on the information you provided, we calculated your resources as follows:

Total resources: \$ 0

PARENT'S CONTRIBUTION: \$.

IV. SUMMARY OF FINANCIAL AID ELIGIBILITY AND AWARD:

TOTAL BUDGET	LESS TOTAL RESOURCES	EQUALS NEED	TOTAL AID OFFERED	UNMET NEED
\$23,579	- \$ 0	= \$ 23,579	\$ 23,579	NONE

Sample SPU Award Letter – COA about \$44,000, EFC = 0

Greetings from Student Financial Services! We are pleased to provide you with your Financial Aid Offer.

Review the bottom of the page for important messages regarding this Offer.

Financial Aid Award

	Autumn 2021	Winter 2022	Spring 2022	Total
SPU Merit Scholarship	3,900	3,900	3,900	\$11,700
SPU Virtual Visit Scholarship	167	167	166	\$500
Falcon Bound Scholarship	1,934	1,934	1,933	\$5,801
Federal Pell Grant	1,948	1,948	1,949	\$5,845
Washington College Grant	3,246	3,246	3,247	\$9,739
Washington State College Bound Scholarship	722	722	721	\$2,165
Federal Direct Subsidized Loan	1,167	1,167	1,166	\$3,500
Federal Direct Unsubsidized Loan	413	413	413	\$1,239
	<u>\$13,497</u>	<u>\$13,497</u>	<u>\$13,495</u>	<u>\$40,489</u>

Additional Financial Aid Eligibility**

	Autumn 2021	Winter 2022	Spring 2022	Total
Federal or State Work Study Eligibility	1,343	1,343	1,344	\$4,030
	<u>\$1,343</u>	<u>\$1,343</u>	<u>\$1,344</u>	<u>\$4,030</u>

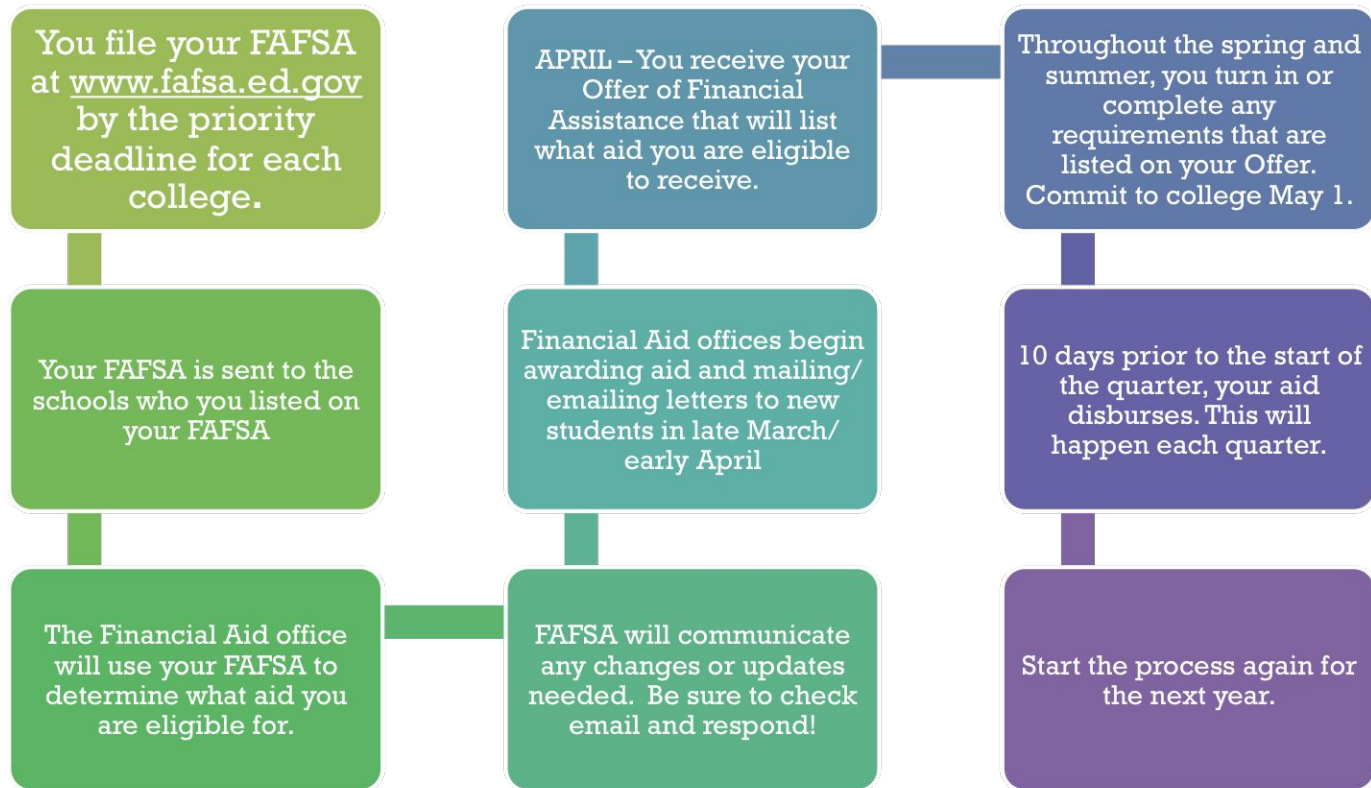
Grand Total, All Sources

\$14,840	\$14,840	\$14,839	\$44,519
-----------------	-----------------	-----------------	-----------------

What should I be thinking about?

- What assets will be available to help pay for college?
- Start a conversation about your student's earnings and savings-consider setting goals.
- How will we make decisions about student loans? How much are we comfortable with?

The FAFSA Cycle



What about starting at a community college?

Pssst! These are called “colleges” now!



Local Colleges

Shoreline College

Edmonds College

Cascadia College

Everett College

Cascadia College

Lake Washington Institute of Technology

Renton Technical College

Seattle Central College

Bellevue College



Why might a student start at a community college?



Affordability: tuition for one year is about $\frac{1}{3}$ the cost of public in-state university (\$1359 /quarter)

Program options: transfer degrees and professional/technical training

Proximity to home

Good fit for families



Washington State **Community and Technical Colleges**

Better Jobs, Brighter Futures, a Stronger Washington

Publicly funded: your taxpayer dollars

Open door practices for age 18+

Straightforward application process

Opportunity to explore big variety of courses and programs

All community colleges offer Transfer Degrees. Take care of the first two years of a university degree!

Financial aid available (HS diploma or GED required)- use FAFSA. Scholarships, too!

Transfer Degree

90 credits

General options:

Associate of Arts- Direct Transfer

Associate of Sciences- Direct Transfer

Planning guides for specific majors:

Be ready to enter a major when you transfer

No guarantee of entrance to a preferred or local university



Professional and Technical Programs at CC's

Range from 3 months to 2+ year programs

Clearly linked to employment

Can be a stepping stone and professional interests evolve or as a way to earn money and fund future education

Establish a sense of competence and adulthood



Use the SBCTC website

Search different college options by PROGRAM

[College Search by Program](#)

– Areas Of Interest (programs)

- ☐ Accounting and Bookkeeping
- ☐ Aeronautics, Aviation, Aerospace, Air Traffic Controller
- ☐ Agricultural and Turf Mechanics
- ☐ Agricultural, Orchard, Brewery and Wine Production
- ☐ Agriculture, Agricultural Management, Farm Irrigation
- ☐ Aircraft, Airframe/Powerplant Mechanic
- ☐ Automotive Collision Repair, Autobody
- ☐ Automotive Service, Electronics, Mechanics
- ☐ Aviation Airline Pilot, Helicopter Pilot, Flight Crew
- ☐ Biotechnology
- ☐ Building/Property Maintenance
- ☐ Business Management/Supervision and Human Resources
- ☐ Cabinetmaking and Millwork
- ☐ Carpentry
- ☐ Civil Engineering
- ☐ Commercial Driver, Forklift Operator
- ☐ Computer Networking and Telecommunications
- ☐ Computer Programming
- ☐ Construction and Construction Management
- ☐ Corrections, Law Enforcement, Criminal Justice, Police Science, Forensics

SBCTC website

Search different college options by COLLEGE
and REGION OR LOCATION

— Location (region)

- ☐ Eastern Washington
- ☐ King County
- ☐ Northwest Washington
- ☐ Pierce County
- ☐ Southwest Washington

— Renton Technical College

- * - Accounting Clerk
- - Accounting Paraprofessional
- * - Accounting Paraprofessional
- - Accounting Specialist
- - Aerospace & Industrial Production Technologies
- * - Aerospace & Industrial Production Technologies
- - Anesthesia Technologist
- - Auto Body Repair & Refinishing
- * - Auto Body Repair & Refinishing
- * - Automotive Maintenance and Light Repair
- - Automotive Technology
- * - Automotive Technology
- - Automotive, Ford ASSET
- ★ - Bachelor of Applied Science-Application Development
- ★ - Bachelor of Applied Science-Computer Network Architecture
- - Band Instrument Repair Technology
- * - Band Instrument Repair Technology
- * - Band Instrument Repair Technology with Guitar Technology
- - Band Instrument Repair Technology with Guitar Technology
- * - Basic Computer Applications
- * - Basic Machining
- * - Carpenter (Northwest Carpenter's Institute (NWCII))

Professional and Technical Programs

Shoreline

Dental Hygiene

Early Childhood Education

Digital Audio Engineering

Automotive: General Service Technician

Short term:

Initial Early Childhood Education

Phlebotomy

Web Design

Edmonds

Allied Health programs: Certified Nursing Assistant, EKG Technician, Acute Care Nursing Assistant, Pharmacy Technician

Culinary Arts

Event Planning

Horticulture

Licensed Practical Nurse

More local program examples

Cascadia

Network Infrastructure Technologies

Mobile App Development

North Seattle

Avionics Technician

EMT certificate

Medical Assisting

Medical Office Administration

Seattle Central

ASL Interpreter

Culinary Arts: Baking

Graphic Design

Bellevue College

Digital Imaging Technologies

Diagnostic Ultrasound

Alcohol and Drug Counseling

Further away . . . but still in King County

Veterinary Assistant

Autobody Repair

Air Traffic Controller

Carpentry

Forensic Technology

Law Enforcement

Welding

Physical Therapy Assistant

Cabinetmaking

Commercial Photography

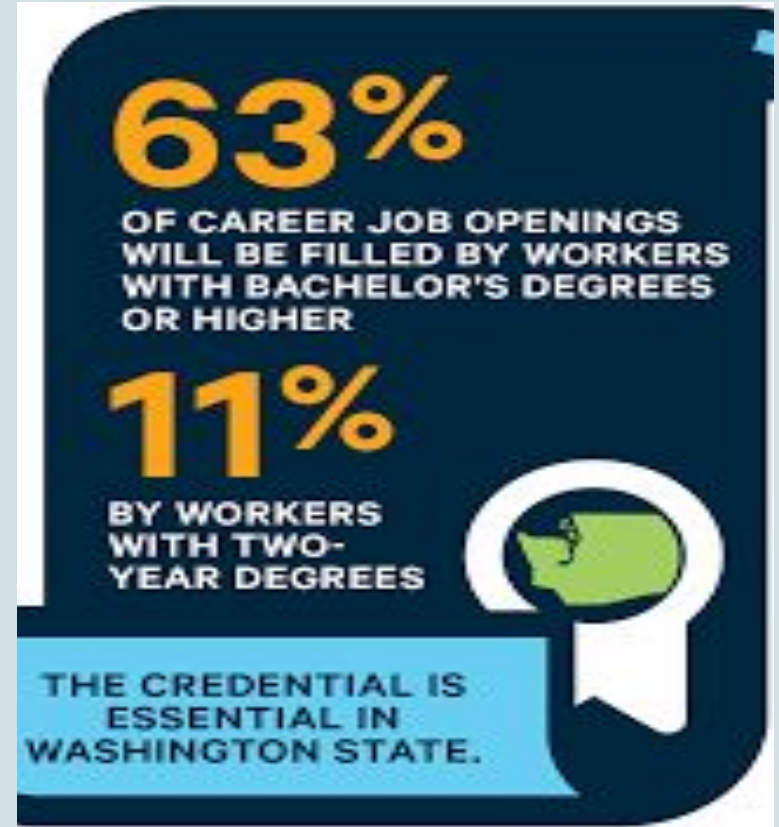
Marine Engineering and other marine

Interpreter Training- Sign Language

Cosmetology

The Credential is Essential

More than 740,000 job openings are coming to Washington State by 2030. Most will be filled by workers with a post-secondary credential: a Degree, Apprenticeship or Certificate.



Next Steps

Visit the colleges ONLINE

Visit the colleges in person, considering both transfer and professional/technical options

Visit the Community and Technical Colleges website: <https://www.sbctc.edu/>